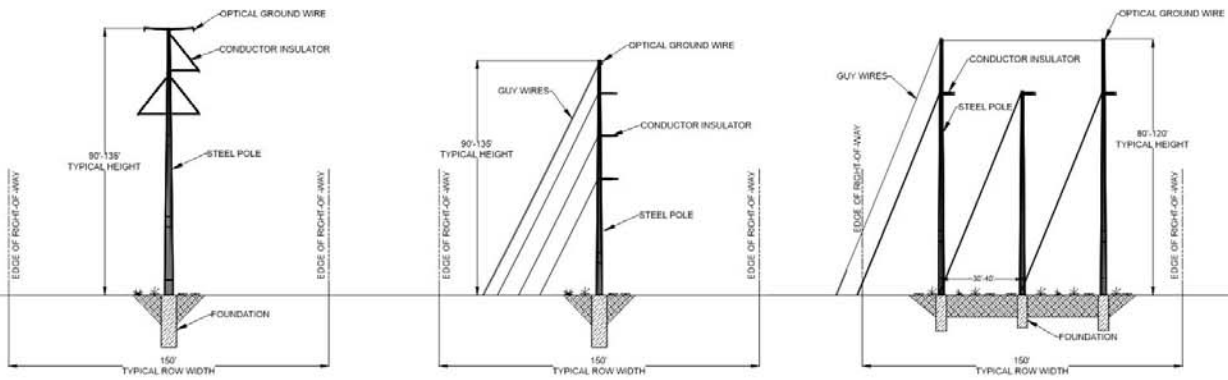


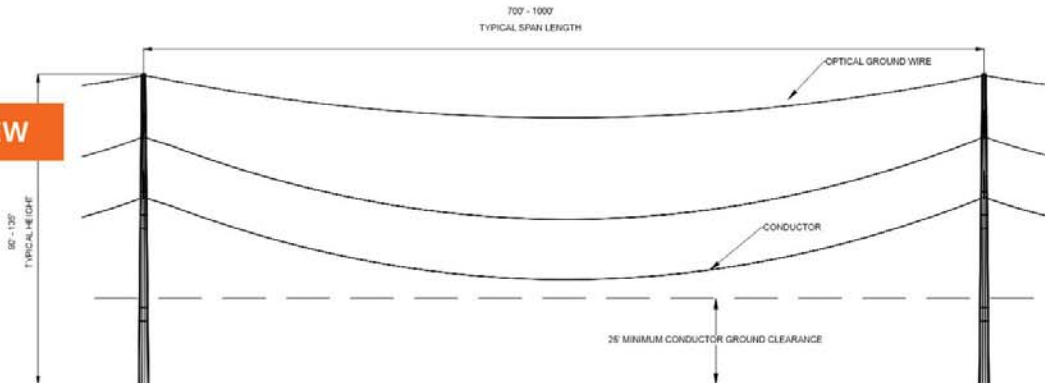
SINGLE CIRCUIT

Tangent and Dead End Structure

STRUCTURE ELEVATION VIEW



PROFILE VIEW



DEAD END STRUCTURE VIEW

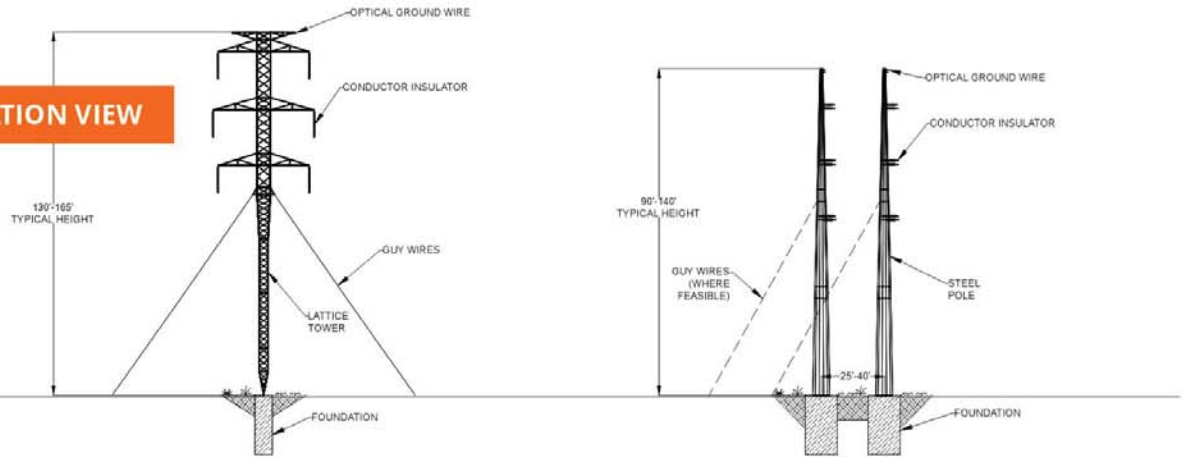


Note: Final structure configuration, height, ROW width, and conductor spacing is dependent on detailed design work, span lengths and local terrain

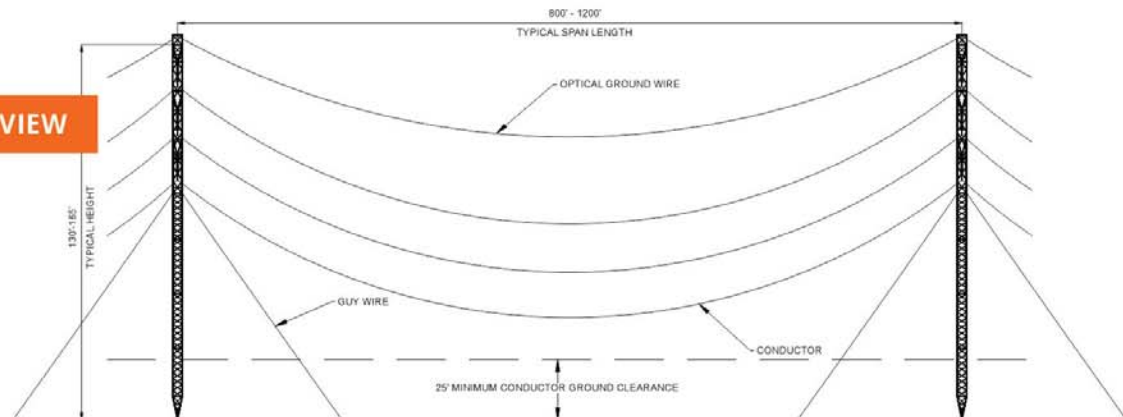
DOUBLE CIRCUIT

Tangent and Dead End Structure

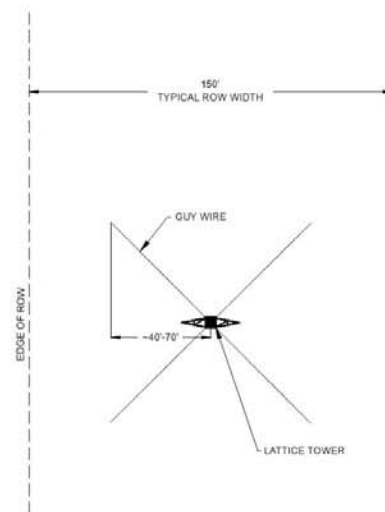
STRUCTURE ELEVATION VIEW



PROFILE VIEW



TANGENT STRUCTURE PLAN VIEW



Note: Final structure height, ROW width, and conductor spacing is dependant on conductor type, span length, and local terrain.

GUYED LATTICE STRUCTURE BENEFITS

MINIMIZE ENVIRONMENTAL IMPACTS

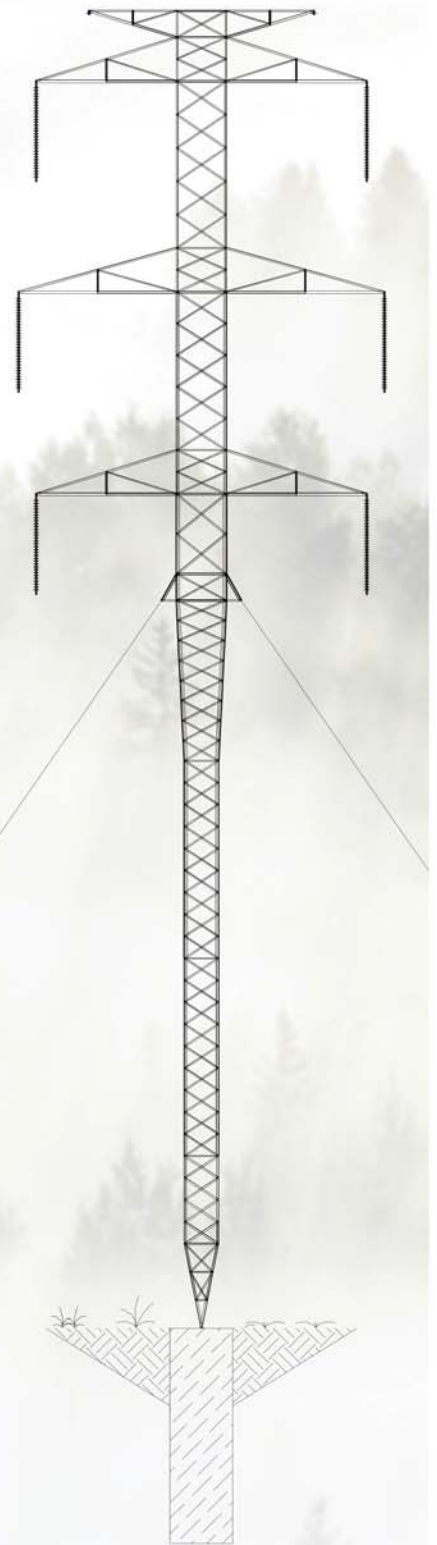
Installation utilizes half the steel and only 20% of the concrete required to install typical monopoles

INCREASE LOCAL ECONOMIC IMPACTS

Assembly will require the use of additional labor and the lower cost will reduce burden on ratepayers

REDUCE TRANSPORTATION IMPACTS

50% fewer trucks will be required to deliver structures and 80% less concrete will need to be delivered to the site



**Aroostook
Renewable
Gateway**

LSP POWER **GRID**
MAINE

(207) 650 -1398 | info@lspgridmaine.com | lspgridmaine.com

